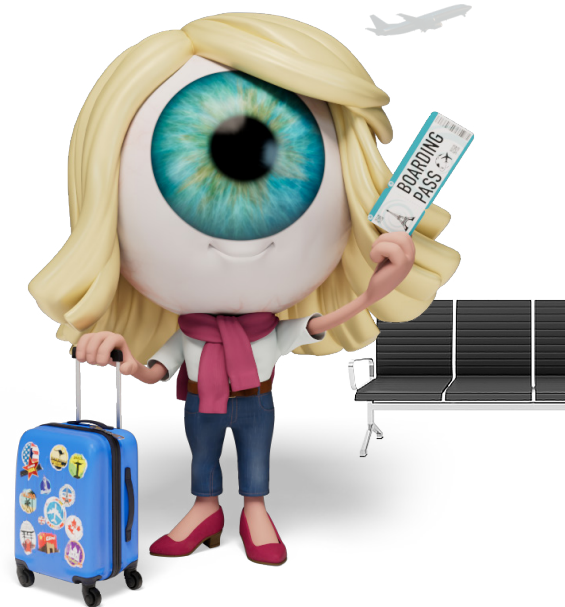


# Talking with your eye doctor about iDose<sup>®</sup> TR

Iris was proactive and talked with her eye doctor about why iDose TR was right for her on-the-go lifestyle. iDose TR is the convenient, FDA-approved treatment for lowering eye pressure that provides continuous, 24/7 release of prescription medication.

iDose TR was proven safe and effective in clinical studies—8 out of 10 people were completely free of prescription eye drops at 12 months with iDose TR.

Use this guide to help prepare for a discussion with your eye doctor about iDose TR. Consider having a family member or friend present, if possible, to help you capture information from the discussion.



## Questions to ask yourself

Leading up to your appointment, reflect on your current treatment plan:

- ? Am I having any challenges with my treatment (eg, difficulty putting in prescription eye drops)?
- ? Do I find myself wishing for an easier treatment option to help lower my eye pressure?
- ? Do I ever forget to use my prescription eye drops or find my treatment schedule inconvenient?
- ? Have I experienced any uncomfortable side effects (eg, stinging, burning, redness)?
- ? Has an eye doctor ever told me to “watch and wait” to see how my glaucoma progresses on my current treatment?

If you answered **YES** to any of these questions, share your answers with your eye doctor to discover if iDose TR may be right for you.

**Please see Important Safety Information and questions to ask your eye doctor about iDose TR on the following page.**

## Questions to ask your eye doctor

These questions can help you have a proactive discussion about iDose TR:

- ... I've heard that iDose TR is a micro-sized drug delivery system that helps manage high eye pressure—can you tell me more about it?
- ... Is iDose TR safe and effective? Are there studies and data to support it? What are the risks associated with iDose TR?
- ... Could iDose TR help reduce or eliminate the inconveniences and challenges I experience with prescription eye drops?
- ... Why do you recommend iDose TR for certain people with open-angle glaucoma or high eye pressure? Do you think I'm someone who might benefit from iDose TR?
- ... What would my treatment routine look like with iDose TR?
- ... How does the iDose TR procedure work? What's the recovery typically like?
- ... Is iDose TR covered by my insurance?
- ... Based on my condition and lifestyle, do you think iDose TR may be right for me?



**IMPORTANT SAFETY INFORMATION** iDose TR is gently placed directly inside your eye by your eye doctor. You should not have iDose TR if you have an infection or suspected infection in your eye or the area surrounding your eye, have corneal endothelial cell dystrophy, a condition in which the clear front layer of your eye (cornea) has lost its ability to work normally as this can cause vision problems, have had a corneal transplant or cells transplanted to the inner layer of the cornea (endothelial cell transplant), are allergic to any of its ingredients, and/or have narrow angles (the iris and the cornea are too close together). The most common side effect of iDose TR was increased eye pressure. Other common side effects were

inflammation of the iris, dry eye, a loss of part of the usual field of vision, eye pain, eye redness and reduced clearness of vision. If you have additional questions, please contact your doctor. For full Prescribing Information visit [www.iDoseTR.com](http://www.iDoseTR.com).

**APPROVED USES** iDose TR (travoprost intracameral implant) is a prescription medicine and drug delivery system for the eye approved to lower eye pressure in patients with open-angle glaucoma or high eye pressure (ocular hypertension). You are encouraged to report all side effects to the FDA. Visit [www.fda.gov/medwatch](http://www.fda.gov/medwatch), or call 1-800-FDA-1088. You may also call Glaukos at 1-888-404-1644.